
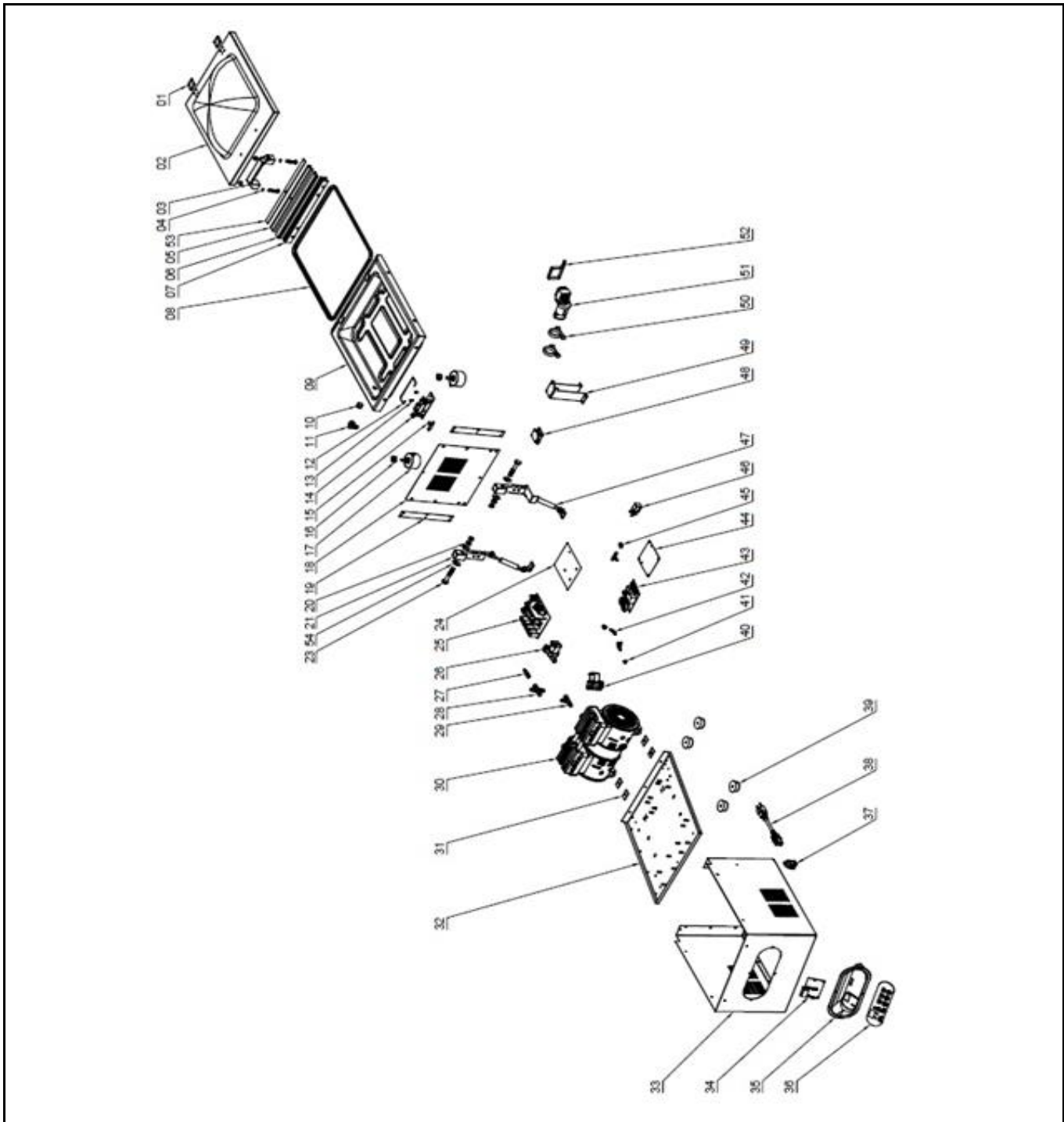



Drawing

 HENDI FOOD SERVICE EQUIPMENT	Batch #	Appliance part#
	661503 and up	975398
	Description	
	Vacuum chamber packaging machine kitchen line	

Date	23-06-2017	Revision #	Revision version
Revision	First bill of materials (BOM)		



Bill of materials (BOM)

 <p>Hendi B.V. Steenoven 21 3911 TX Rhenen The Netherlands</p>	Batch #	Appliance part#
	661503 and up	975398
	Description	
	Vacuum chamber packaging machine kitchen line	

Date	23-06-2017	Revision #	Revision version
Revision	First bill of materials (BOM)		


Item	Description	Part#	Quantity	Remark	Picture
1	vacuum lid connect plate	nss	2	Available as 942383	
2	vacuum lid	942383	1	Incl item 1,3,4,5,6 and 8	
3	Handle	942390	1	Incl item 4	
4	Washer incl screw	nss	2	Available as 942390 and in set 942383	
5	Holder silicone gasket	nss	1	Available as 942406 and in set 942383	
6	Silicone gasket	942406	1	Incl item 5 and also in set 943383	
7	Sealing bar complete assembly	942413	1		
7a	Teflon gasket (tape)	942659	1	Not shown on exploded view	
7b	Teflon Tape whole roll (65mm*30m)	942666	1	Not shown on exploded view	
7c	Heating Wire	942673	1	Not shown on exploded view	
8	Gasket lid	942420	1	Also available in 942383	
9	Vacuum chamber	942826	1		
10	Inlet vent valve	942833	1		
11	L connector	n/a	1		
12	Locking pin	942437	1		
13	Bracket locking pin	n/a	2		
14	Vacuum bag holder complete assembly	942444	1		
15	Three-way connector	n/a	1		
16	M12 screw and nut	nss	2	Available as 942451	
17	Insulator	942451	2	Incl item 16	
18	Back cover	n/a	1		
19	Bracket	n/a	2		
20	M10 nut	n/a	2		
21	Left hinge	n/a	1		
22	M10 washer	n/a	4		
23	Bolt M10x	n/a	2		
24	Power supply pcb insulation pad	nss	1	Available as 942468	
25	Power supply pcb	942468	1	Incl item 25	
26	Inlet valve	942475	1		
27	Three-way connector	942482	1		
28	Four-way connector	942499	1		
29	Three-way connector (big)	942505	1		
30	Vacuum pump	942512	1		
31	Damper	942840	4		
32	Bottom cover	n/a	1		
33	Housing	n/a	1		
34	Display pcb	942536	1		
35	Controller housing	n/a	1		
36	Display sticker (Hendi)	942529	1		
36a	Display sticker (sousvidetools)	942864	1		
37	Power socket	n/a	1		
38	Power cord EU plug	900680	1		
38a	Power cord UK plug	900673	1		
39	Feet	942543	4		
40	Outlet valve	942550	1		
41	Two way connector	n/a	1		
42	Right angle two way connector	n/a	1		
43	Main pcb	942567	1	Incl item 43	
44	Main pcb insulation pad	nss	1	Available as 942567	
45	Ø 8.4 line buckle	n/a	1		
46	Valve magnetic (small)	942574	1		
47	Right hinge assembly	n/a	1		
48	Micro swich assembly	942581	1		
49	Micro swich assembly bracket	n/a	1		

50	Plastic cover for small pump	n/a	1		
51	Small pump	n/a	1		
52	Fixing plate for small pump	n/a	1		
53	Washer for fix plate	n/a	1		
54	M10 washer	n/a	1		

n/a -> not available

nss -> not sold separately

Circuit diagram

 HENDI FOOD SERVICE EQUIPMENT Hendi B.V. Steenoven 21 3911 TX Rhenen The Netherlands	Batch #	Appliance part#
	661503 and up	975398
	Description	
	Vacuum chamber packaging machine kitchen line	

Date	23-06-2017	Revision #	Revision version
Revision	First bill of materials (BOM)		

Place the circuit diagram here !